

# gastroenterology

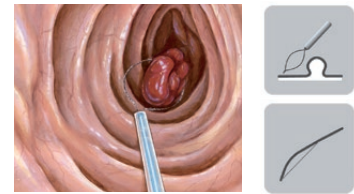
safety and precision in endoscopic procedures



## SPECTRUM

result oriented performance

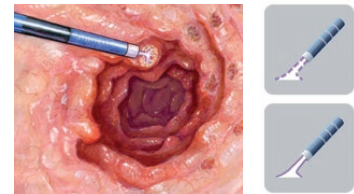
**SPECTRUM** SPECTRUM is a state-of-the-art electrocautery system that automatically adapts to the user's needs so that each surgical intervention is as effective as possible.



### POLIPO CUT/PAPILLO CUT

Indications:

- polypectomy,
- sphincterotomy - biliary pancreatitis,
- endoscopic mucosal resection (EMR)
- endoscopic submucosal dissection
- hemostasis of superficial bleeding



### ENDO ARGON/PULSE ARGON

Indications:

- residual tissue removal and haemostasis of bleeding areas after polypectomy,
- bleeding from angiodysplastic lesions,
- bleeding from malignant lesions in the stomach and colon, colitis.

**SmartDevice System** SmartDevice System detects and identifies the connected instrument. It automatically adjusts the appropriate operating modes and output parameters.

**Endoscopic modes** Modes available in SPECTRUM electrocautery unit were specially designed to ensure high precision in endoscopic procedures. Their advantage is the automatically controlled cutting process. The alternately applied cutting and coagulation currents allows for effective cutting the tissue while maintaining hemostasis. Instant measurement of all cutting parameters guarantees efficient and safe operation in all conditions.

**EMED Endo-Detect** EndoDetect System minimises the risk of perforation by preventing accidental activation of current flow. It ensures the safety of the performed procedures.

**ENDO ARGON** Argon-enhanced monopolar coagulation for endoscopic procedures. Enables gentle, superficial coagulation. It is necessary when there is a risk of perforation. The absence of smoke ensures the perfect visibility of the operative field. Instruments: flexible argon probes.

**PULSE ARGON** Argon-enhanced pulsed monopolar coagulation. It is used in gastroenterology to control bleeding. It enables the precise delivery of energy doses exactly to the bleeding site. Instruments: flexible argon probes.



100-013 Electro-surgical unit SPECTRUM



**Disposable neutral electrode EMED SAFE**

812-80H hydrogel, split, for adults and children, 176x122mm, 110cm<sup>2</sup>



**Disposable neutral electrode cable**

380-030 L: 3m, flat plug



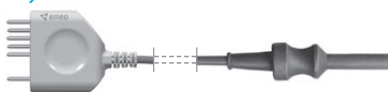
**Two-pedal footswitch, MultiSwitch**

100-303 cable 5m, 6-pin plug  
100-313 wireless



**SpectrumLine trolley**

080-100 with argon cylinder case for electro-surgical units (2 x 5L/10L)



**Monopolar endoscopic cable**

281-03S L: 3m, 3mm female, SDS plug



**Argon Cylinder**

100-051 5L (empty housing - with no gas)  
100-151 10L (empty housing - with no gas)



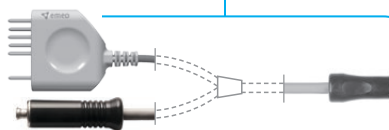
**Argon regulator P300-P40EMED**

5501640 DIN 477/6 (Europe)  
5501565 DIN 477/6, with pressure sensor  
5501641 DIN 477/10 (Northern Europe)  
5501621 BS 341/3 (UK)  
5501631 CGA 580 (America)



**Flexible argon probe, reusable**

932-148 Ø 1,5 mm, length 1,5m  
932-149 Ø 2,3 mm, length 2,2 m  
932-150 Ø 3,2 mm, length 2,2 m  
932-151 Ø 1,5 mm, length 3 m  
932-152 Ø 2,3 mm, length 3 m



**Monopolar cable for argon flexible electrode**

432-46S L: 3,5m, SDS /LuerLock plug, flat connector



Attention! This brochure does not replace instructions for use! Consult instructions for use!



See our catalogue for a comprehensive range of accessories. For more information, contact the regional representatives or visit [www.emed.pl](http://www.emed.pl)

EMED SP. Z O. O. SP. K. | Ryżowa 69a | 05-816 Opacz-Kolonia | Poland  
tel: + 48 22 723 08 00 | email: [export@emed.pl](mailto:export@emed.pl) | [www.emed.pl](http://www.emed.pl)

The information contained in this brochure is intended for health care professionals and medical equipment distributors.

Copyright © EMED.  
All rights reserved. Any copying, distribution and publication in whole or in part without written permission of EMED is prohibited.



REF 2022.09.K15.EN